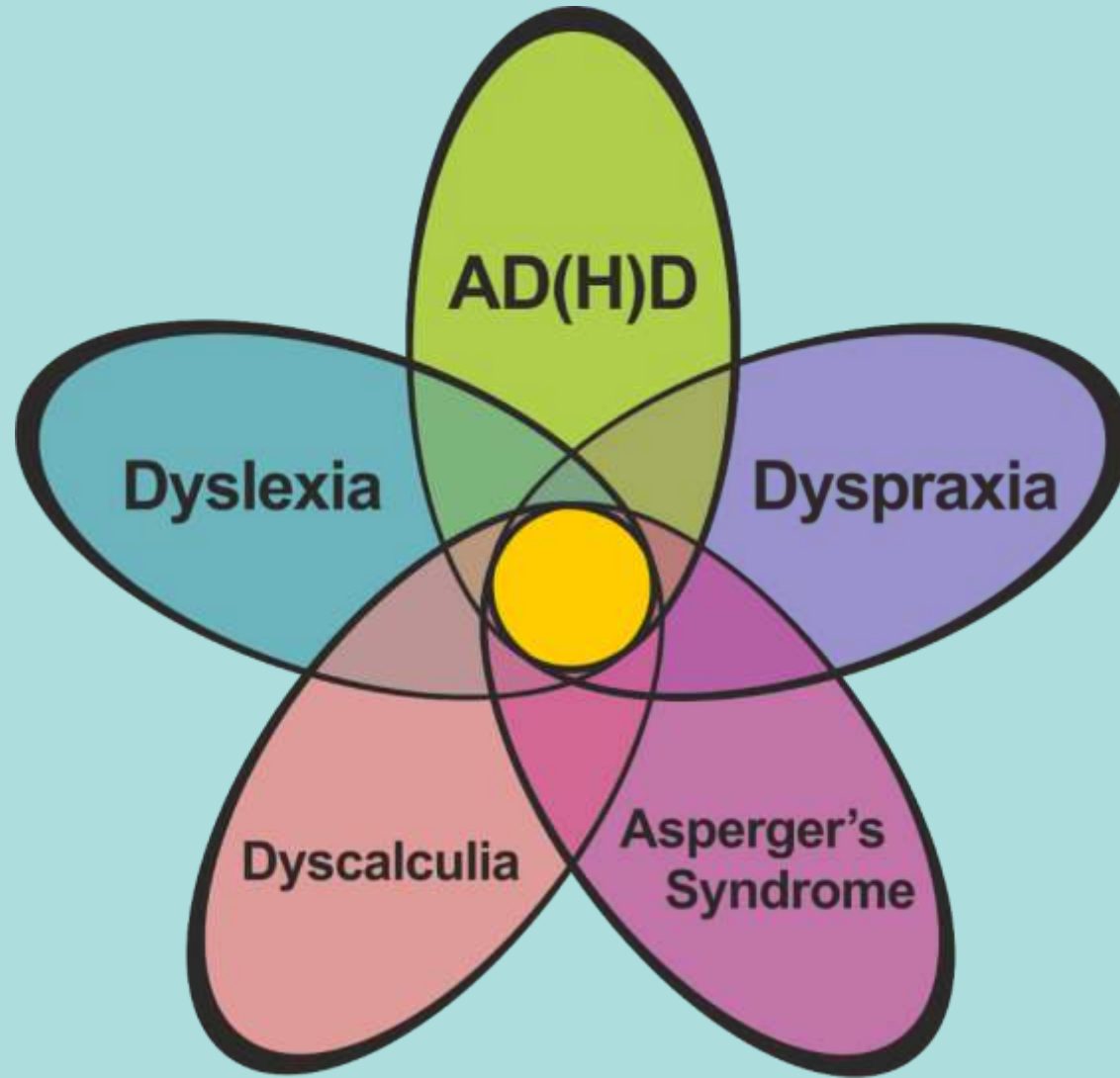


*ELT well*

# **Working with multilingual learners who have additional challenges**

**Dr. Anne Margaret Smith**

# Specific Learning Differences



Identification

Support and accommodation

**How can we identify  
the challenges facing  
multilingual learners?**

# Some of the Issues

- Communication
- Cultural and linguistic differences
- Assessment issues

## EAL or SpLD?

often uses the wrong prepositions

misses out articles in written work

takes a while to answer questions

often runs sentences together

makes weird spelling errors

reads much more slowly than peers

often seems to misinterpret what is said

misses the -s off third person singular verbs

# 2 minutes.....

## EAL or SpLD?

often uses the wrong prepositions

misses out articles in written work

takes a while to answer questions

often runs sentences together

makes weird spelling errors

reads much more slowly than peers

often seems to misinterpret what is said

misses the -s off third person singular verbs

# 1 minute.....

## EAL or SpLD?

often uses the wrong prepositions

misses out articles in written work

takes a while to answer questions

often runs sentences together

makes weird spelling errors

reads much more slowly than peers

often seems to misinterpret what is said

misses the -s off third person singular verbs



## EAL or SpLD?

often uses the wrong prepositions

misses out articles in written work

takes a while to answer questions

often runs sentences together

makes weird spelling errors

reads much more slowly than peers

often seems to misinterpret what is said

misses the -s off third person singular verbs

# We need to consider:

- the student's background
- literacy development
- memory
- speed of processing
- phonological processing
- the student's background

# CAML

**PLUS** *young learners*

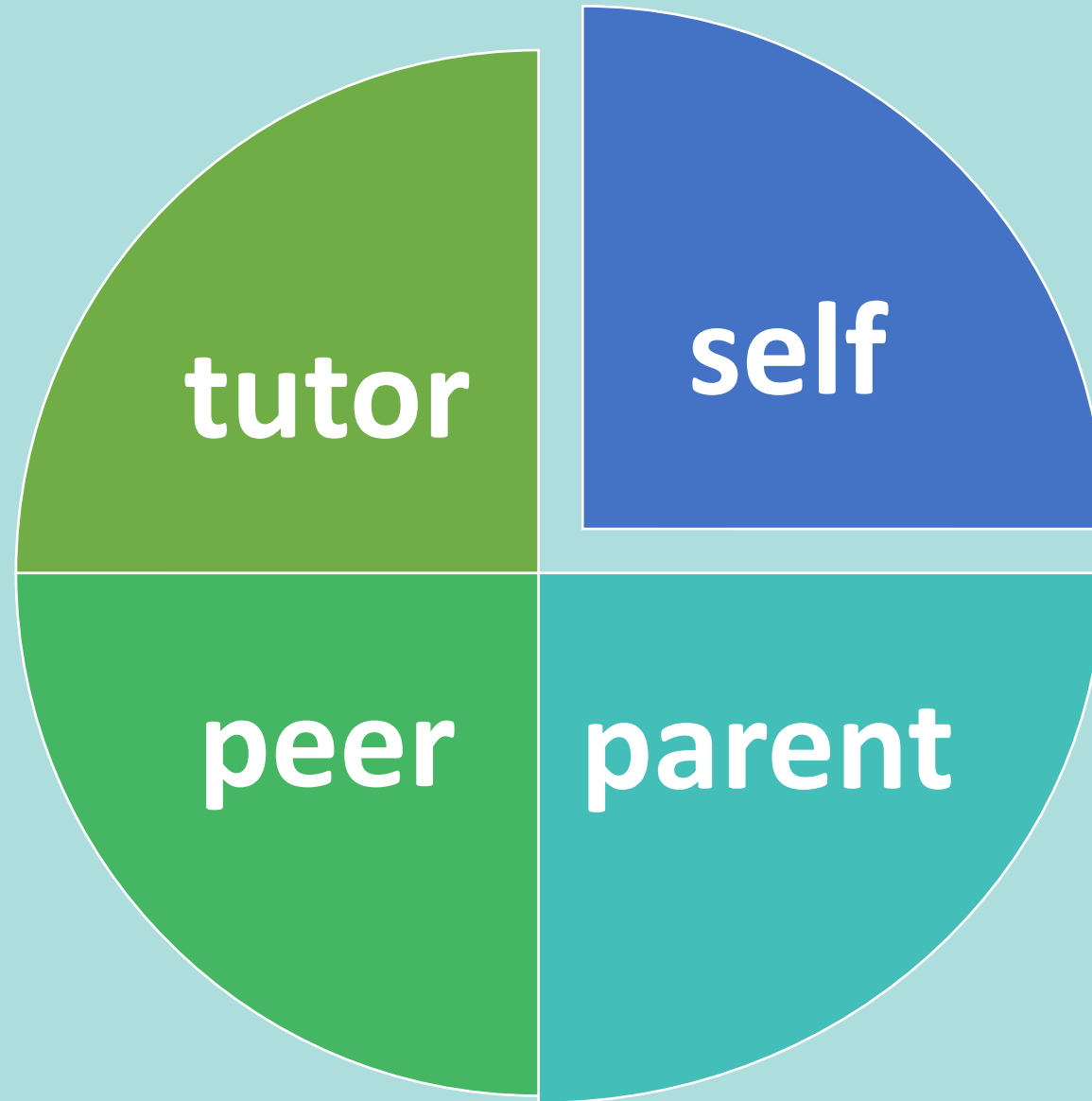


**How can we  
support and accommodate  
these learners?**

# 4 Key Principles

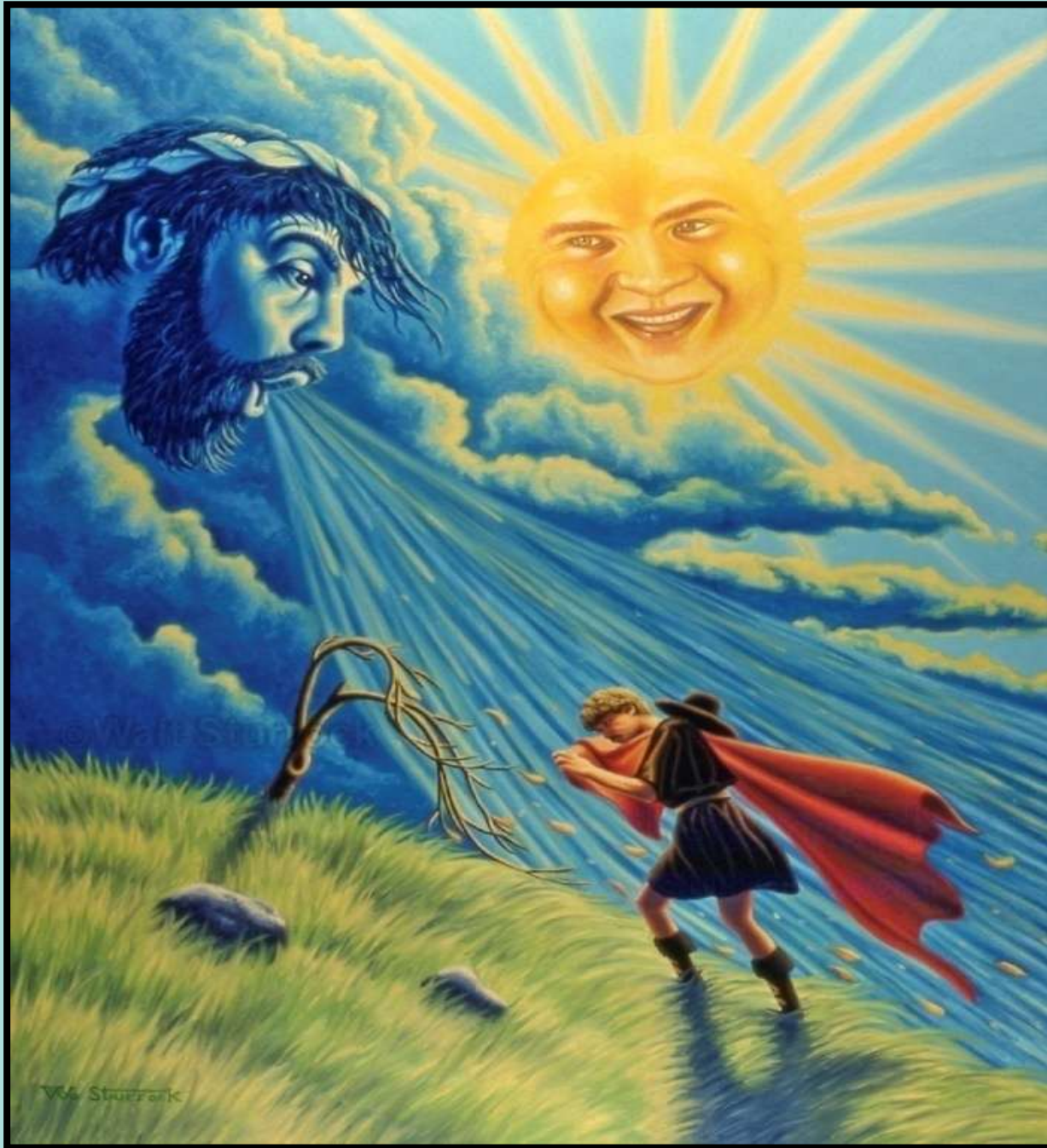
1. Break tasks into **chunks** + **time management**
2. **Recap, review** and **revise** frequently + **memory strategies**
3. Offer **explicit** instruction + **metacognitive strategies**
4. Provide **multisensory** input + **self-awareness**











*ELT well*

Anne Margaret Smith

*ams@ELTwell.co.uk*